

RS-68A

Propulsion System



Pratt & Whitney Rocketdyne



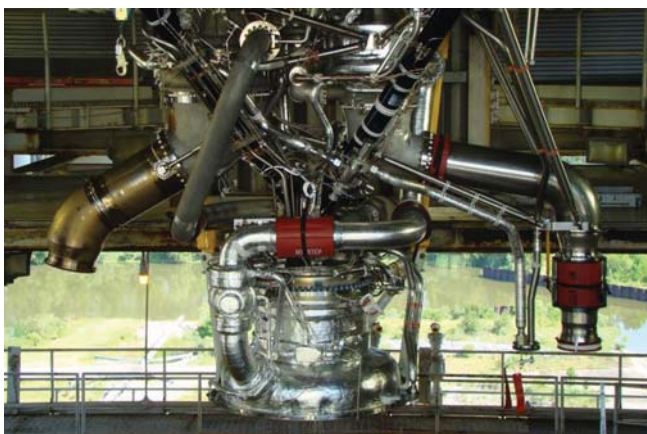
Pratt & Whitney
A United Technologies Company

RS-68A

Propulsion System



RS-68A Development Engine 14001 assembled at SSC.



Engine 14001 installed in SSC B1 test stand.



Engine 14001 hot-fire test at Stennis Space Center, MS.

Overview:

The RS-68A is a liquid hydrogen-liquid oxygen booster engine for the United Launch Alliance Delta IV family of launch vehicles. The engine is an upgrade to the RS-68, and has 39,000 pounds of additional thrust and 6 seconds more specific impulse. The RS-68A is in development and certification testing, and the first production engines will be delivered in spring 2010.

Specifications

Thrust, vacuum:	797 Klbf
Thrust, sea level:	702 Klbf
Chamber Pressure:	1566 psia
Engine Mixture Ratio:	5.97
Isp, vacuum:	415 sec
Isp, sea level:	366 sec
Expansion Ratio:	21.5
Weight:	14,950 lbs



Pratt & Whitney

A United Technologies Company